

Used worldwide:

TIC is proven in over 125 commercial and government projects operating worldwide.

Used by:

- Radio stations.
- Governments.
- Commercial service providers.
- Automobile clubs.
- Toll road operators.
- Car and navigation manufacturers.

Used for:

- Connected vehicles.
- Data harmonization and exchange.
- Navigation system testing.
- Parking information.
- RDS-TMC.
- TPEG.
- Traffic and travel information services.
- Traffic news for radio.
- Work zone.
- And more...

TIC history:

Since introduction in 1997 TIC is continually evolving based on customer requests and market analysis.

Purchase:

- Flexible and scalable licensing and pricing.
- For annual and perpetual periods.
- From GEWI or from authorized partners.

Implementation:

- Configurable platform for customized solutions.
- Small to large deployments.
- Centralized or distributed.
- Fast to deploy and easy to learn.
- Complete hosted solution available.

Operation:

- High availability with load balancing and failover.
- New and improved features available regularly.
- 24/7 support worldwide.

About GEWI

GEWI is the developer of TIC, a commercial off-the-shelf software (COTS) platform used for information services, as proven in many commercial and government projects operating worldwide. TIC is a cost-effective, robust, and scalable alternative compared to build-your-own systems. TIC was first introduced in 1997 and is now in its fourth generation. Founded in 1992, GEWI has become a global company with corporations in Europe, North America, and Asia.

Memberships

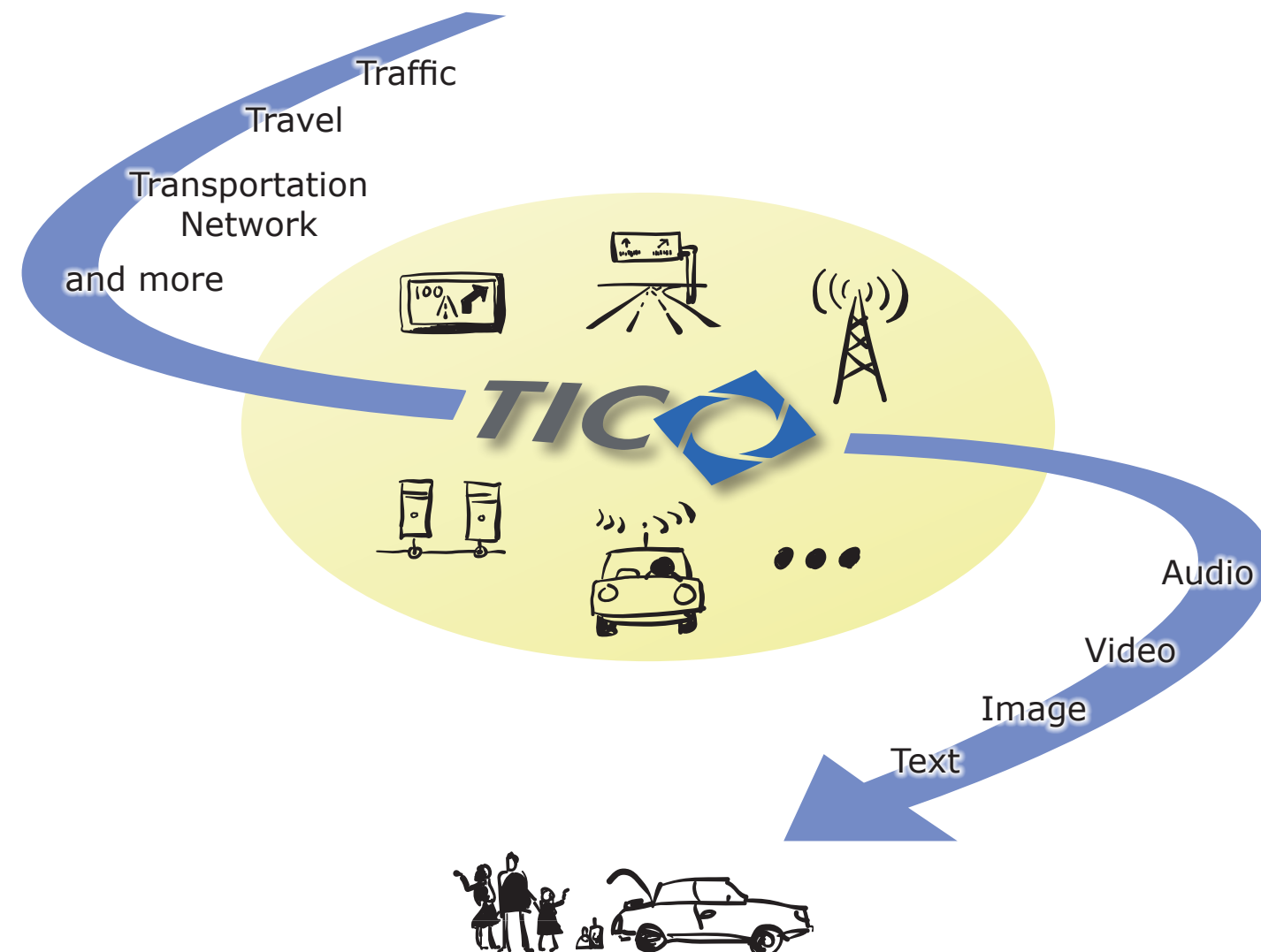


More information and contacts

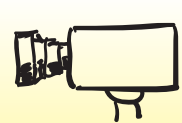
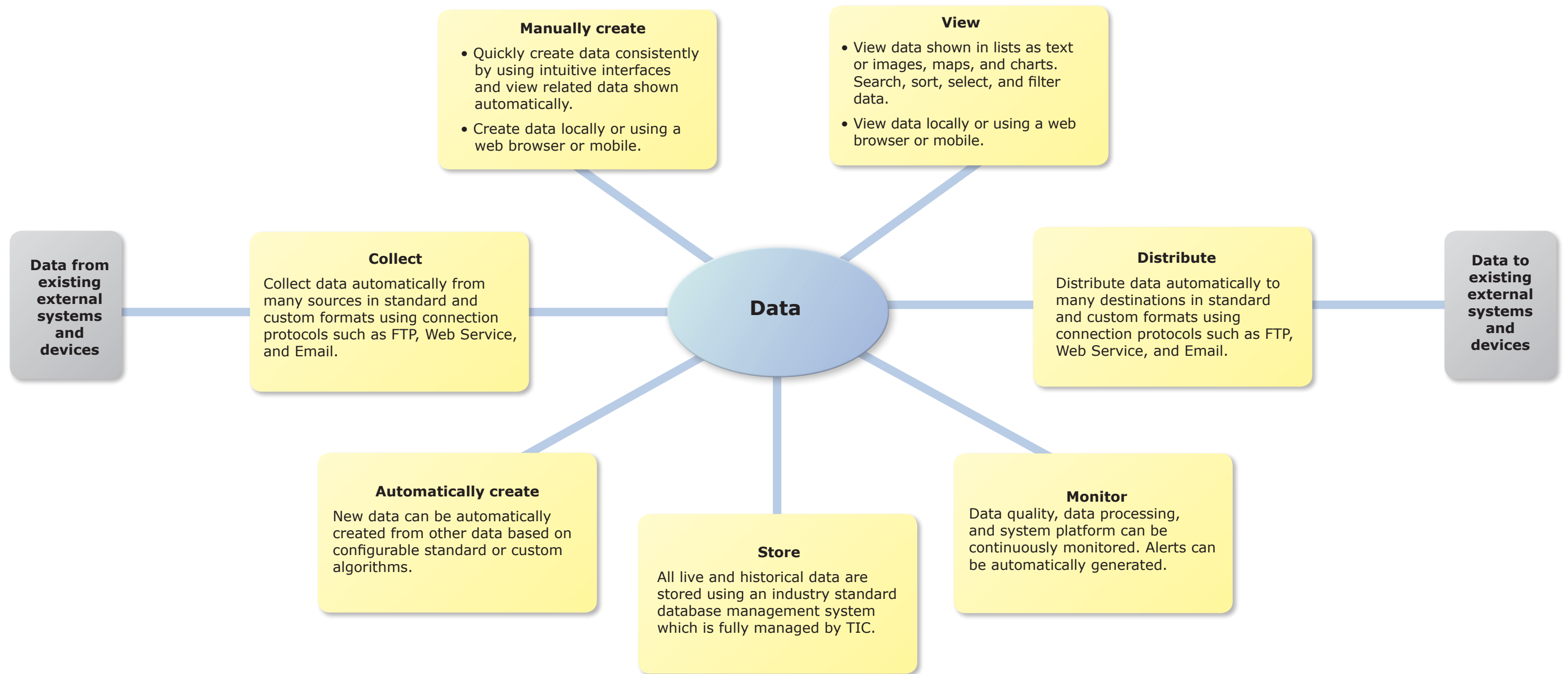
For more information about GEWI business and products, to find a contact in your region, or to subscribe to the GEWI newsletter, please visit www.gewi.com.

TIC CONNECTS

Systems - Vehicles - Travelers



Software Platform for Processing Traffic and Travel Data



Camera



Digital map



Traffic flow



GPS



TPEG



VMS



Work zone



Weather



Traffic and travel event



Mobile traffic data entry



Traffic news



RDS-TMC



Parking



Location referencing